

We are looking forward to seeing you next Saturday for the Moors the Merrier event.

Please grab a brew, sit down and read the following important notes to prepare you for event day.

THE MOST IMPORTANT THING TO REMEMBER IS YOUR PRESENT AND SANTA HAT/OUTFIT!!

Please try to spend around £5 on a present, wrap it up and place it in the dedicated tub when you arrive at the clubhouse. Santa hats or outfits are not compulsory but participants who do have a santa hat or outfit are allowed to constantly boo people who turn up without the Christmas spirit! ;)

We are very sorry, but also please note that we can no longer do any transfers, refunds or cancellations as we have submitted all data to Open Tracking and no changes can now be made.

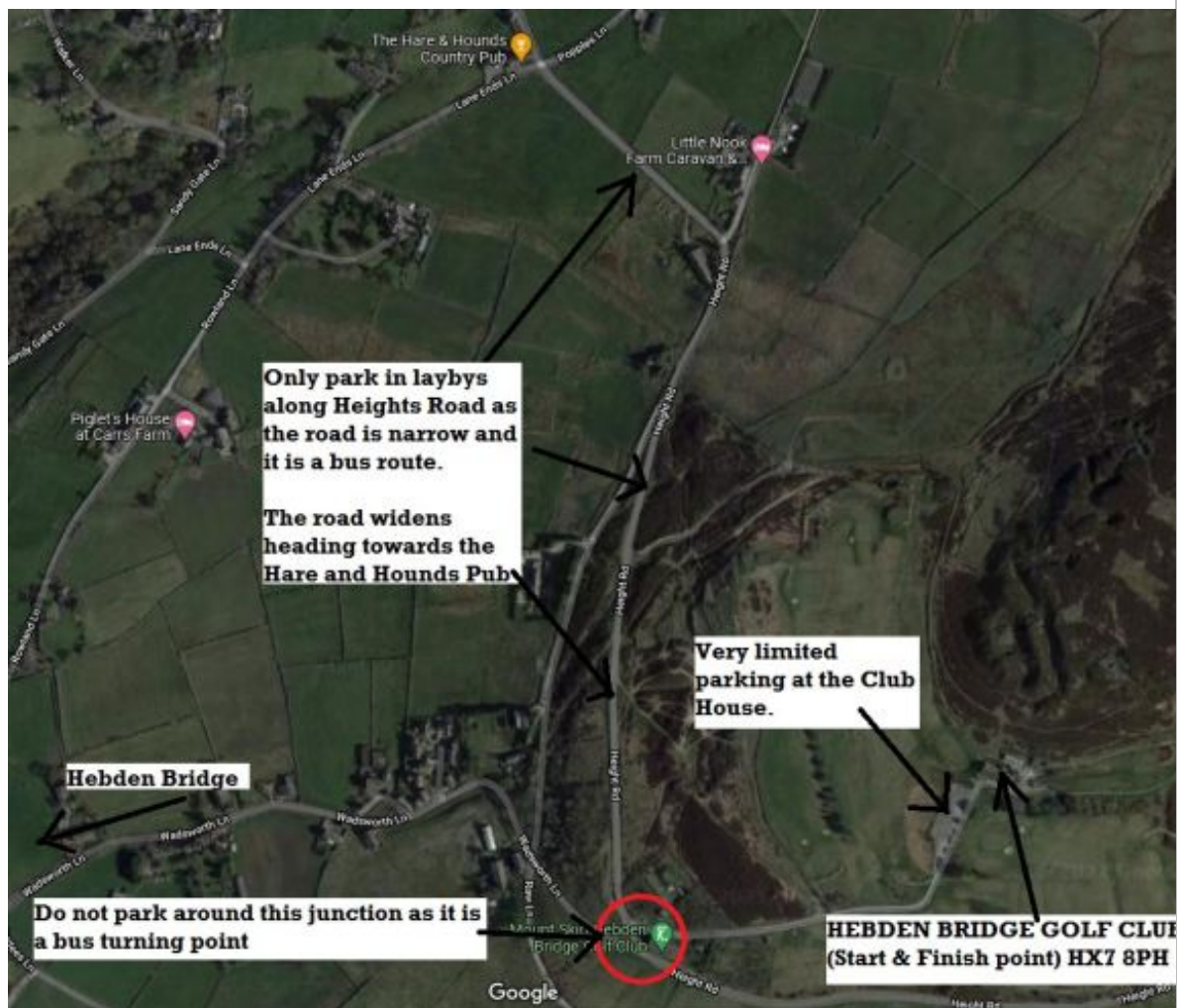
BAD WEATHER ROUTE (just in case):

Please keep an eye on the weather forecast. It is winter and anything can happen. If it snows and we cannot access the clubhouse (which nearly happened in 2022), the event will unfortunately have to be cancelled. If we go ahead in bad weather, we will adopt the bad weather route which will omit the higher ground. Please familiarise yourself with the bad weather route below, just in case. The GPX file is available on the website [HERE](#)



CAR PARKING

This is by far the most complicated issue I hope to have on the day. Parking is very, very limited and if you are on the 9am start, you won't get on the golf club car park. On street parking is the only other option. BUT please be aware that Heights Road is very narrow and is also used as a bus route. Please do not park around the bus turning circle at the bottom of the golf club drive and only park in lay-bys. The road widens towards the Hare and Hounds pub (now shut) to enable parking down the right hand side (as you approach the pub from the golf club). Parking is also possible further back on the roadside towards Midgley where the road widens and it is not a bus route. Plus there's room on the moor for a few as well. I would advise parking further down the valley, towards Hebden on Wadsworth Lane. Please be considerate to local residents and respect their wishes. Car share as much as possible. You can bring a bag to leave at the clubhouse to change after the event, but remember to store it in the changing rooms as we will be preparing the room for when you return. If you are travelling to the event the day before in a campervan, you can park overnight at the clubhouse but there will be no facilities as the clubhouse will be locked up for the night (unless I am there setting up). See map below for parking options...



CLUB HOUSE

Hebden Bridge Golf Club are looking forward to hosting the event once again and will make you all very welcome. But they have three rules.....

- Please do not go into the main clubhouse with muddy trainers after the event. Once you have finished please remove your footwear either outside or in the changing rooms, before going upstairs onto their carpet (sorry about making you go up further steps once you've finished).
- Please store all your bags in the changing rooms (bag labels available at registration). The changing rooms have showers but please bring your own towel.
- Muddy dogs are not allowed upstairs in the clubhouse.

When you arrive, there will be tea, coffee and toast available for free while you do your last minute kit faff



After the event, the bar will be open for much needed re-hydration. Hot drinks will be available to warm you up after the event, along with your food choice.

Bran tub present.

Ok, so for those who don't know, a bran tub is just a lucky dip. Please don't forget to bring a wrapped present for the tub and place it in the tubs provided near kit check. When you have finished the event and handed in your tracker, please help yourself to a present from the tub, trying hard not to select your own present you brought. This is not compulsory, but just a bit of Christmas fun so you don't need to take part.



KIT CHECK

There will be a kit check before you register. Please ensure that you are carrying the following kit when you arrive.....

- Santa hat
- Waterproofs (top and bottoms) with taped seams and the jacket must have a hood
- Hat and gloves (extra pair of gloves if the bad weather route is used)
- A physical map of the route (digital maps are allowed along side the paper map), a traditional compass & whistle
- Santa hat
- Plastic mug for hot drinks on route (optional but there will be no cups at checkpoints)
- Spare long sleeve top
- Spare food and drink
- Santa hat
- Survival bag

- Head torch
- Santa hat (and before you ask, you don't need 4 Santa hats)

Race Maps

Pre ordered race maps can be collected on the day before kit check. They will be A3 size and printed on waterproof and tearproof paper. You can also pre order maps by emailing me if that helps. Limited copies will be available on the day. PLEASE DON'T TURN UP WITHOUT A PAPER MAP.

REGISTRATION AND TRACKERS

Registration opens at 7am for the 8am starters ONLY. If you are on the 9am start, you can hang around upstairs in the clubhouse until after 8am when registration and kit check opens for the 09:00 race.

Once past kit check, you'll be given a token so you can register. Please ensure that you collect your number and tracker and more importantly, drop off your present for the bran tub (very, very important).

We are using the good people at Open Tracking for results service and will have live results throughout the day (Your bib number will also have a QR code to the results). The trackers will track your location and give a time for each checkpoint when visited. Note that if you miss a checkpoint, the trackers will detect this and you will be classed as 'Did Not Finish' (DNF).

I will provide you a link to the tracking page by Wednesday next week so you can access, and share to family and friends.



Please ensure that as soon as you finish, you hand in your tracker. We will collect the tracker off you when you finish outside the clubhouse. We are charged for any lost trackers and even trackers that are returned late so please don't go home with them still in your rucksack.

THE ROUTE AND CHECKPOINTS (CP's)

Please follow the advertised route and do not intentionally short cut it. The route is not flagged at any point so you must navigate your way around the course, visiting each checkpoint in the correct order (1 to 7).

If you have done this event before, please note the renumbered checkpoints and the new location of the Widdop Checkpoint at the Pack Horse Inn.



Not all CP's will be manned or signed in any way, but the trackers will detect that you have been there. The only manned CP's will be 2, 4, 5 and 6. Refreshments and hot drinks will be available at CP4 & 6 only. CP4 & 6 have toilets and CP6 will have the usual whisky and beer!



PRIZES

The first 3 male and female runners will be presented with their prize as they finish. Only participants on the 9am start will be eligible for the prizes, which means if you start at 8am and break the course record....it won't count.

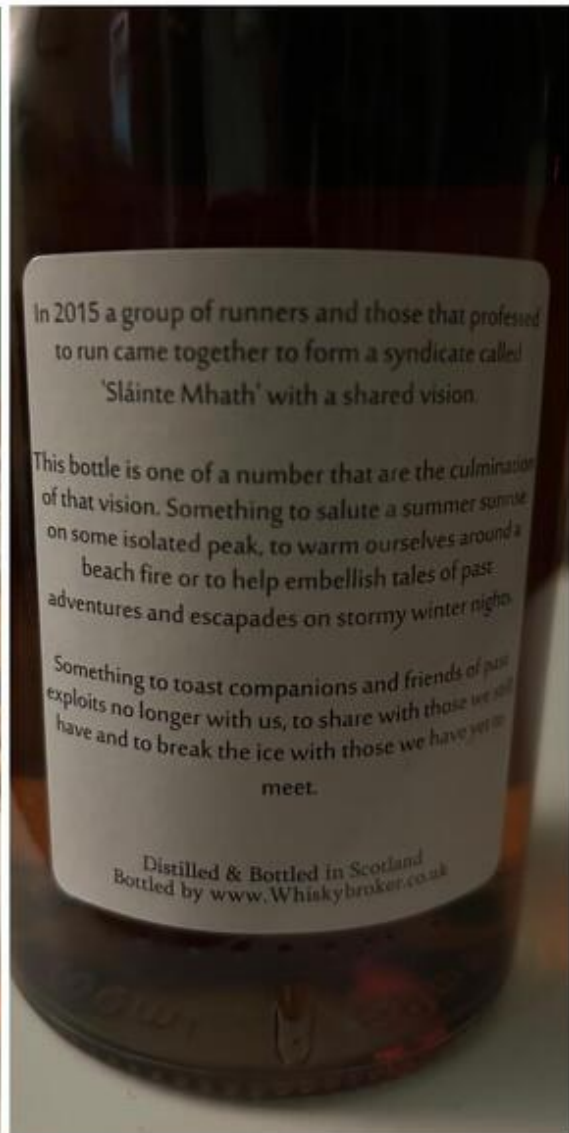
GRITSTONE PUBLISHING COORPERATION



GRITSTONE PUBLISHING

Andrew Bibby from Gritstone Books will have a stall set up showing off their collection of books. Specialising in publishing non-fiction and fiction titles relating to the landscape and the countryside, their books will be a great Christmas gift. More info about the books can be found by clicking [HERE](#).

WHISKY FOR SALE



10 years ago, on a drunken New Years Eve, I invested in a barrel of Whisky with a group of running friends. What has resulted is a fantastic whisky from the Arran Distillery. I will be putting on a couple of bottles at CP5 to get you in the mood for the last 10k. If you would like to buy a bottle of this unique whisky, I have a limited amount of bottles for sale at the clubhouse for £50. Again, it will make a great Christmas Present.

We will also have our CraggRunner bobble hats for sale once again at £15 making the perfect winter hat pressies.

COMMUNITY RIGHTS OF WAYS SERVICE (CROWS)



At some point in the afternoon, we will present a cheque to the great people at [CROWS](#). They are a voluntary group of hard working people who give up their time to help maintain and restore footpaths all around Calderdale. Donations given from the last few CraggRunner events (Race you to the Summit, Soyland and Moors the Merrier) from participants will be handed over. If you wish to donate, please do so on the day as they do great work and they rely on donations to keep going.

Right, I think that's it. I will send the tracker link next week but in the meantime, please feel free to contact me with any questions you may still have.

In the meantime, to get you in the mood, watch the video from the 2022 event by The Sunday Pootle, Lee Martin.....

<https://youtu.be/pFV-JKepTm0>

See you all next Saturday.

Daz and the Craggeteers team



All enquiries regarding this email should be directed to [Darren Graham](#).